



# **Santa Clarita Valley Sanitation District Chloride Compliance Program**

Matt Bao

Project Engineer

Los Angeles County Sanitation Districts

April 23, 2015



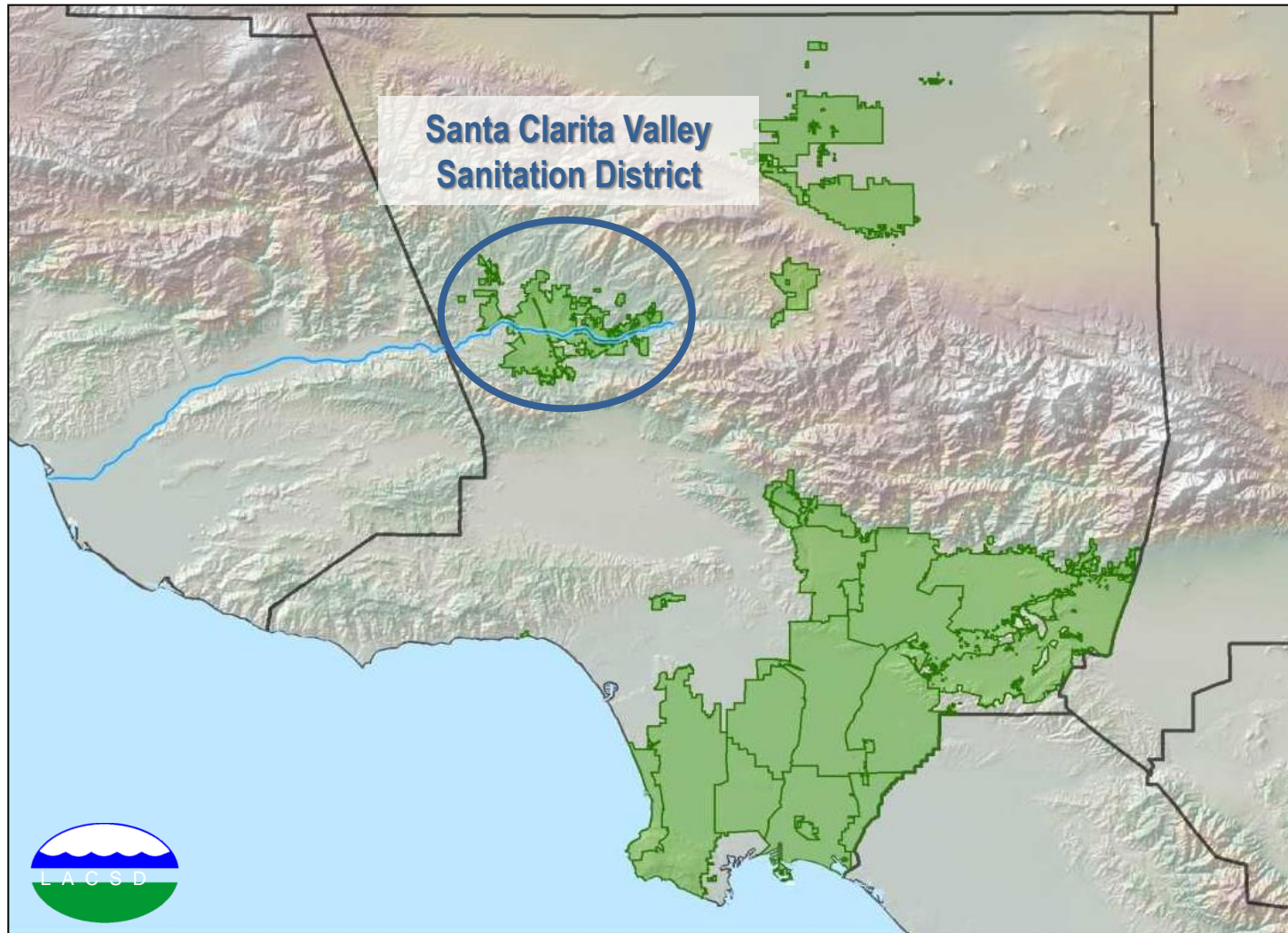


# Presentation Overview

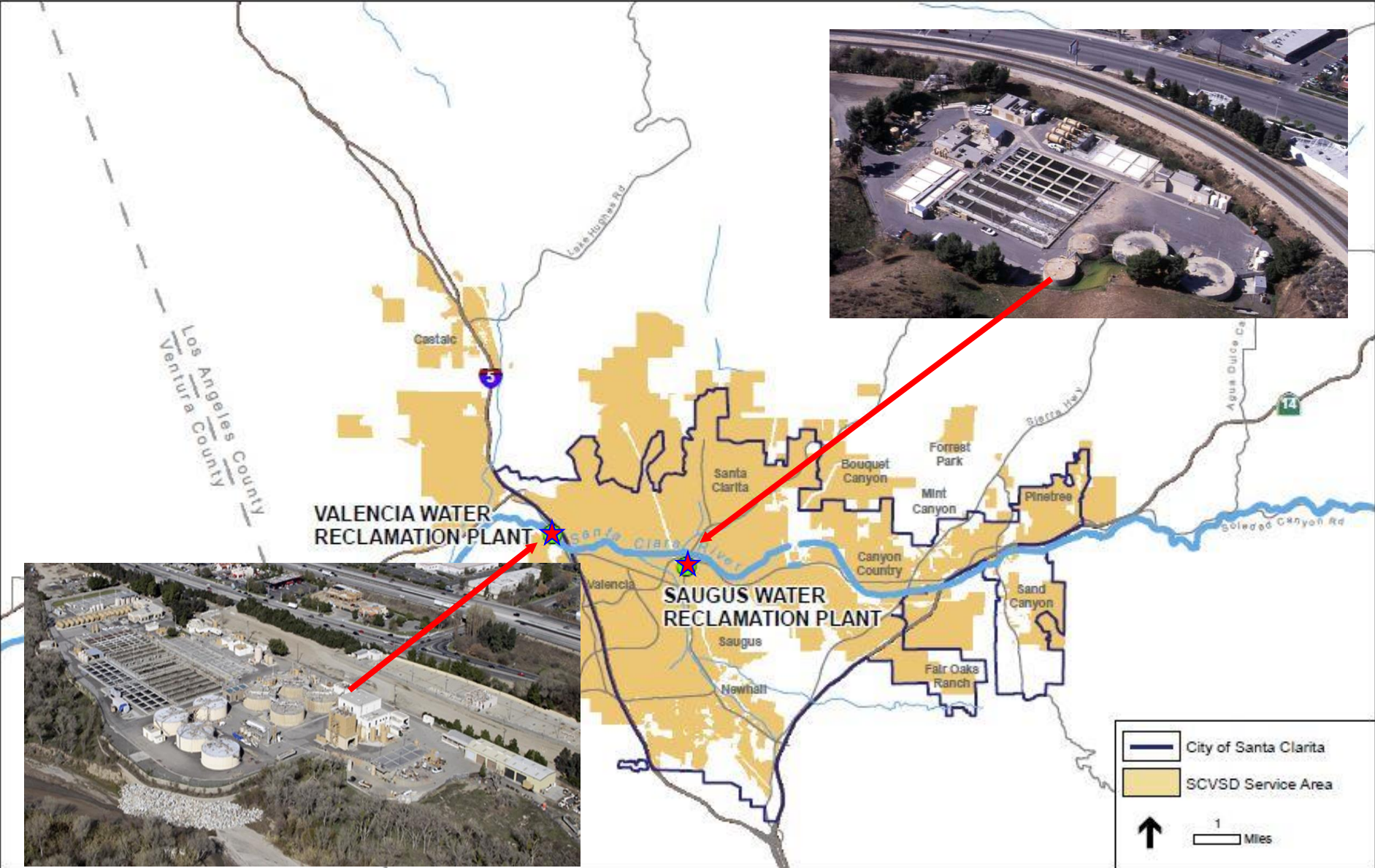
- Background on Chloride Issues in Santa Clarita
- Steps to Local Control of Automatic Water Softeners (AWS)
- Optimized Chloride Compliance Project



# County Sanitation Districts of Los Angeles County

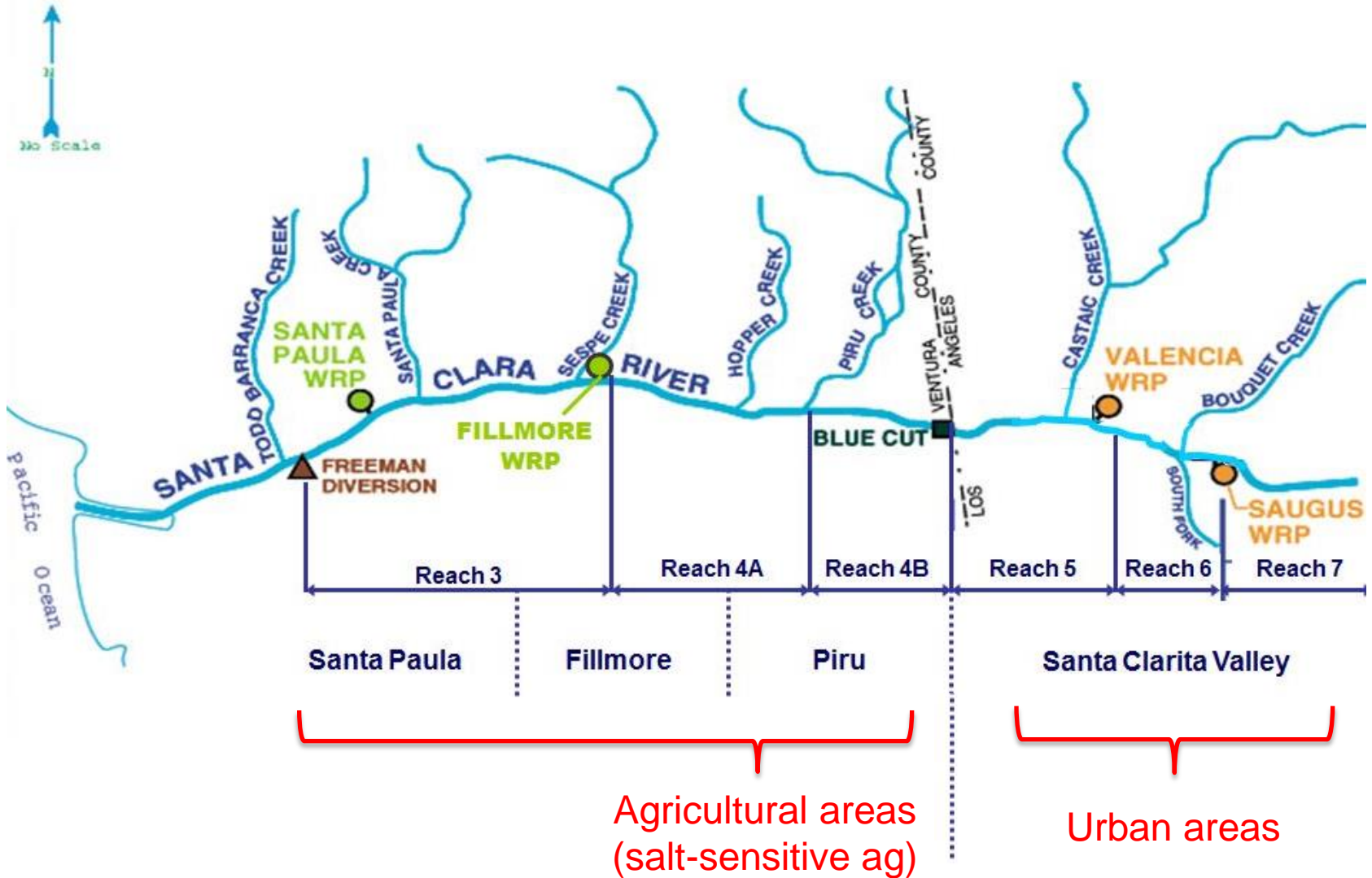


# Santa Clarita Valley Sanitation District (SCVSD)



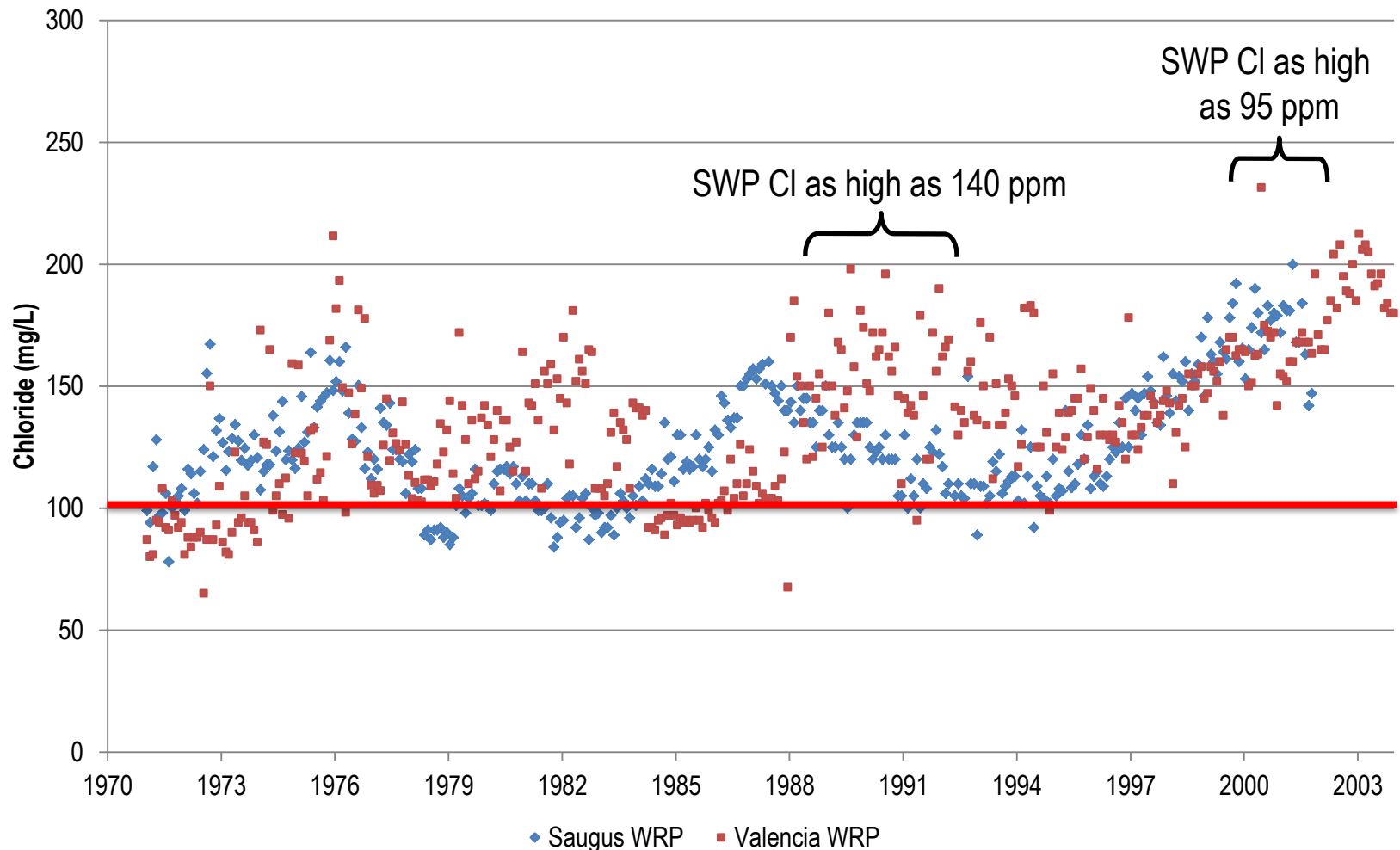


# Santa Clara River Watershed





# Recycled Water Chloride Levels



- **1989 – Regional Board sets ultimate discharge standard of 100 mg/l**
- **2002 – Regional Board adopts TMDL to implement standard**

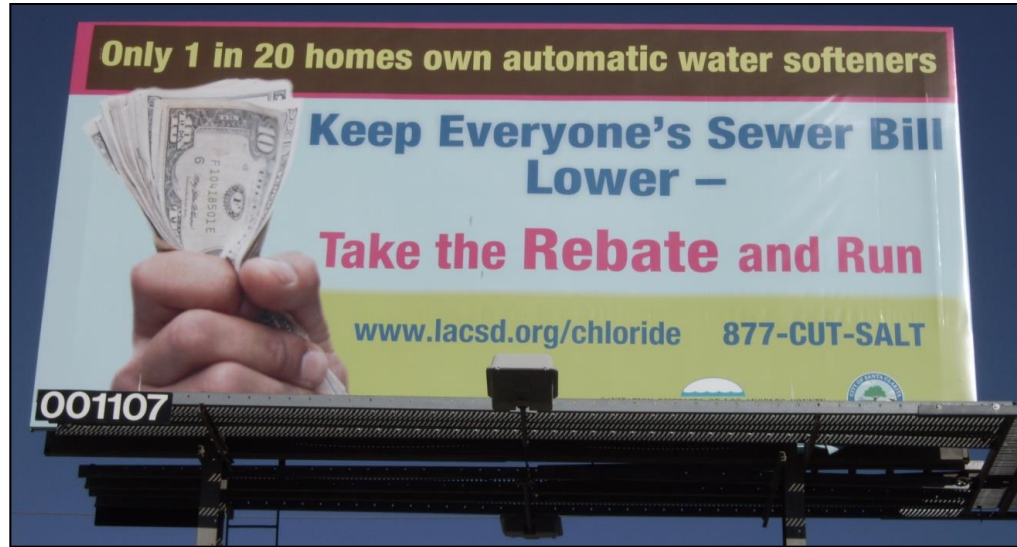


# **SCVSD Chloride Compliance Program**

- Integrated approach that has been in development for over 10 years
- Source Control Program for Chloride
- Certification of a Facilities Plan and EIR
- Approval to move forward with optimized Chloride Compliance Project



# Source Control Program for Chloride







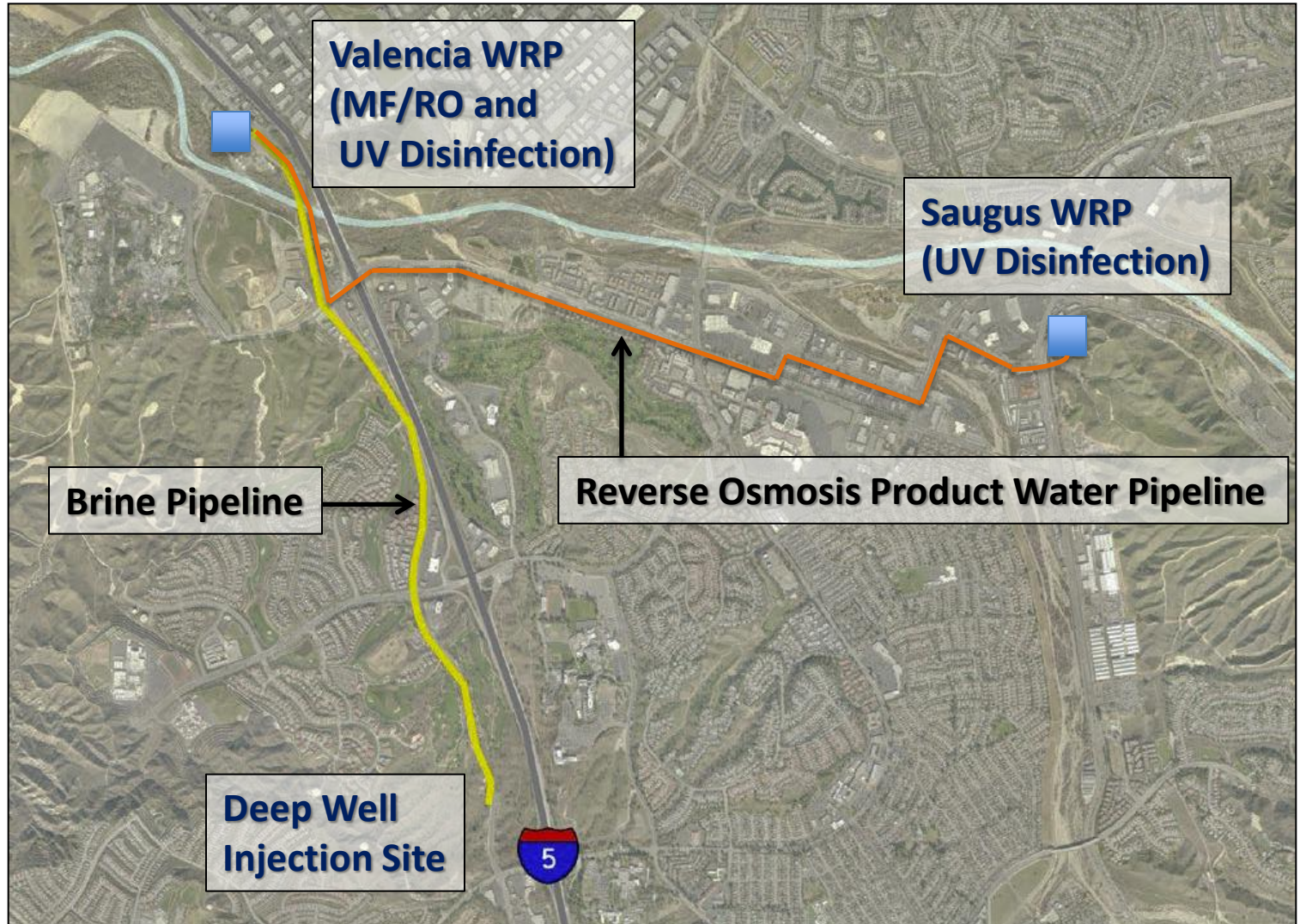
# Water Softener Removal

## Basic Facts About Measure “S”

- Requires four (4) percent of Santa Clarita Valley homes to remove salt-based “automatic” water softeners
- Complies with a State Order to cut salt levels in the Santa Clara River
- Results in a cleaner environment by protecting our river and groundwater
- Minimizes sewer charge increases
- Pays owners of salt-based water softeners \$275 to \$2,000 to remove their old units
- Allows ALL OTHER types of water softeners to be used



# Approved Chloride Compliance Project





# Final Compliance Project

- UV Disinfection
- 7.1 MGD Microfiltration & Reverse Osmosis
- Deep Well Injection of Brine (now considering alternatives including brine minimization & trucking)
- Capital Cost Approximately \$120 Million (without permeate pipeline)



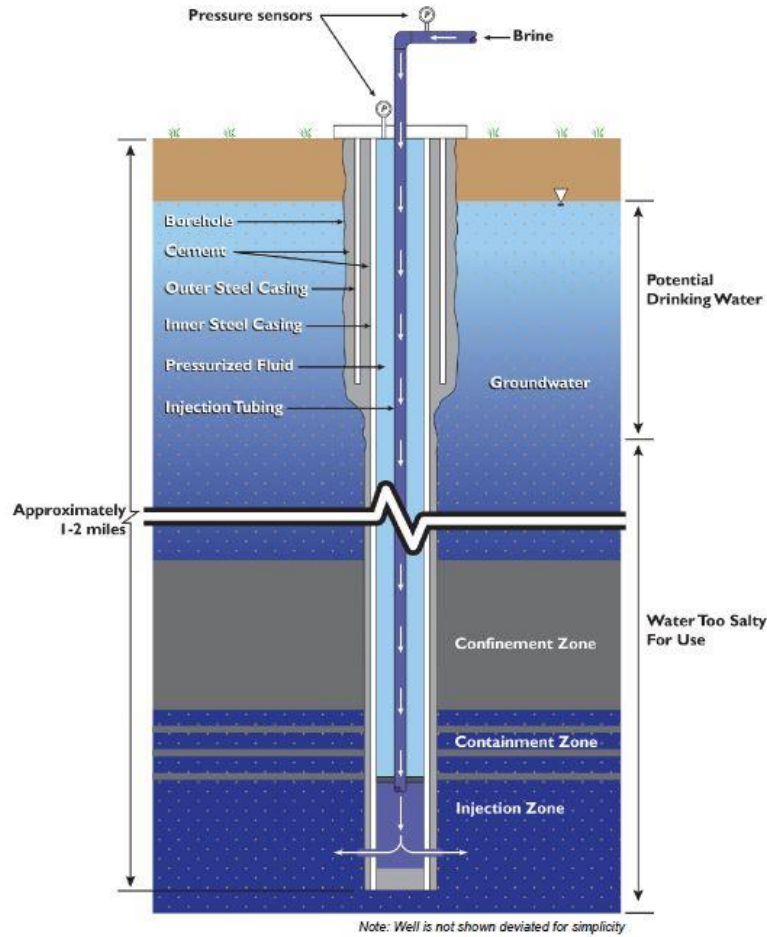
# Final Compliance Project



- Microfiltration/ Reverse Osmosis
- Brine Minimization
- Ultraviolet Disinfection (closed vessel)



# Final Compliance Project (cont.)



- Deep Well Injection



# Questions?

**Matt Bao**

**Los Angeles County Sanitation Districts**

**(562) 908-4288 ext. 2809**

**[mbao@lacsds.org](mailto:mbao@lacsds.org)**